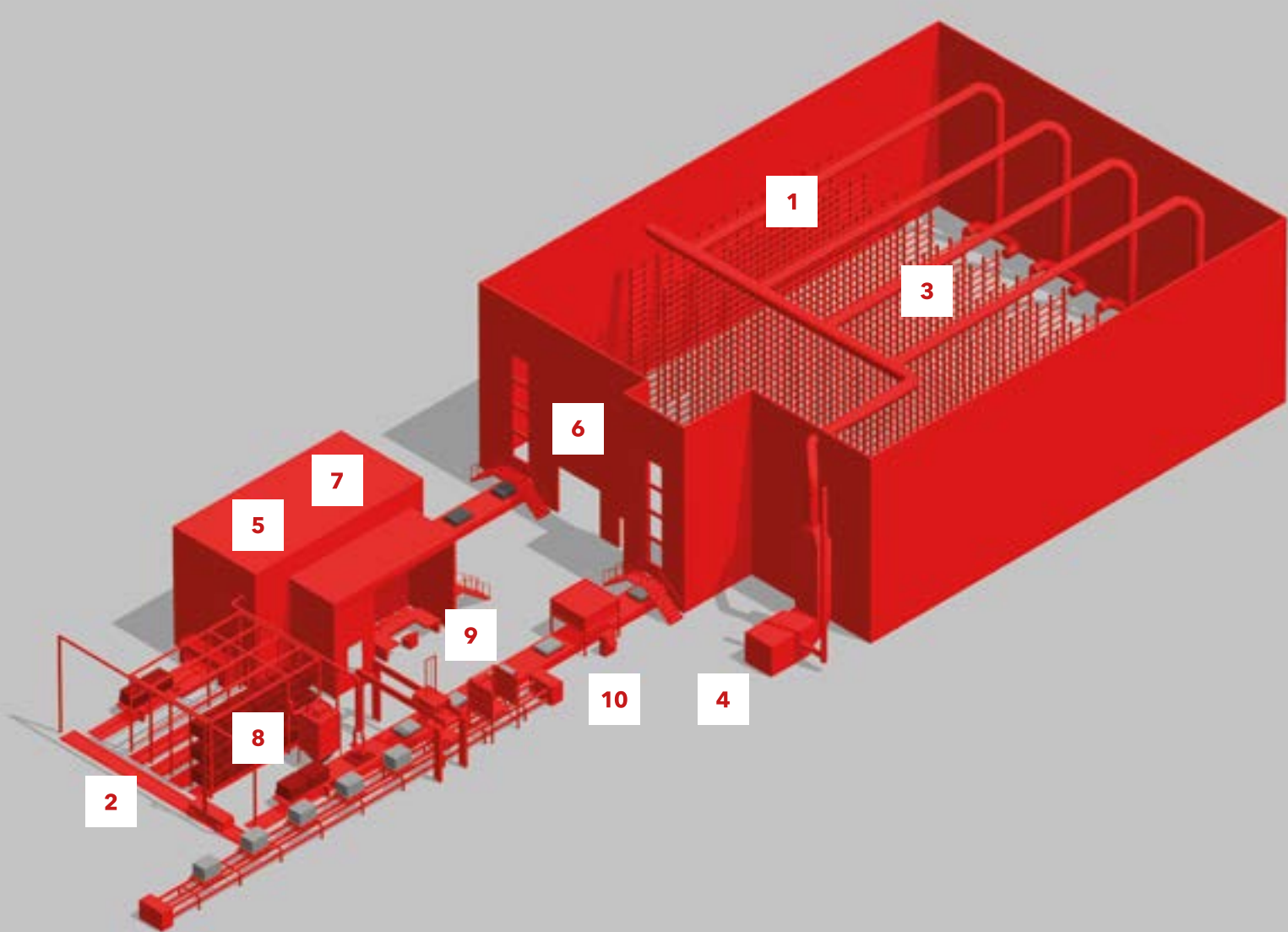


FOR BEST CONDITIONS.  
SINCE 1900.



**The leading  
intelligent system  
for the concrete  
industry.**



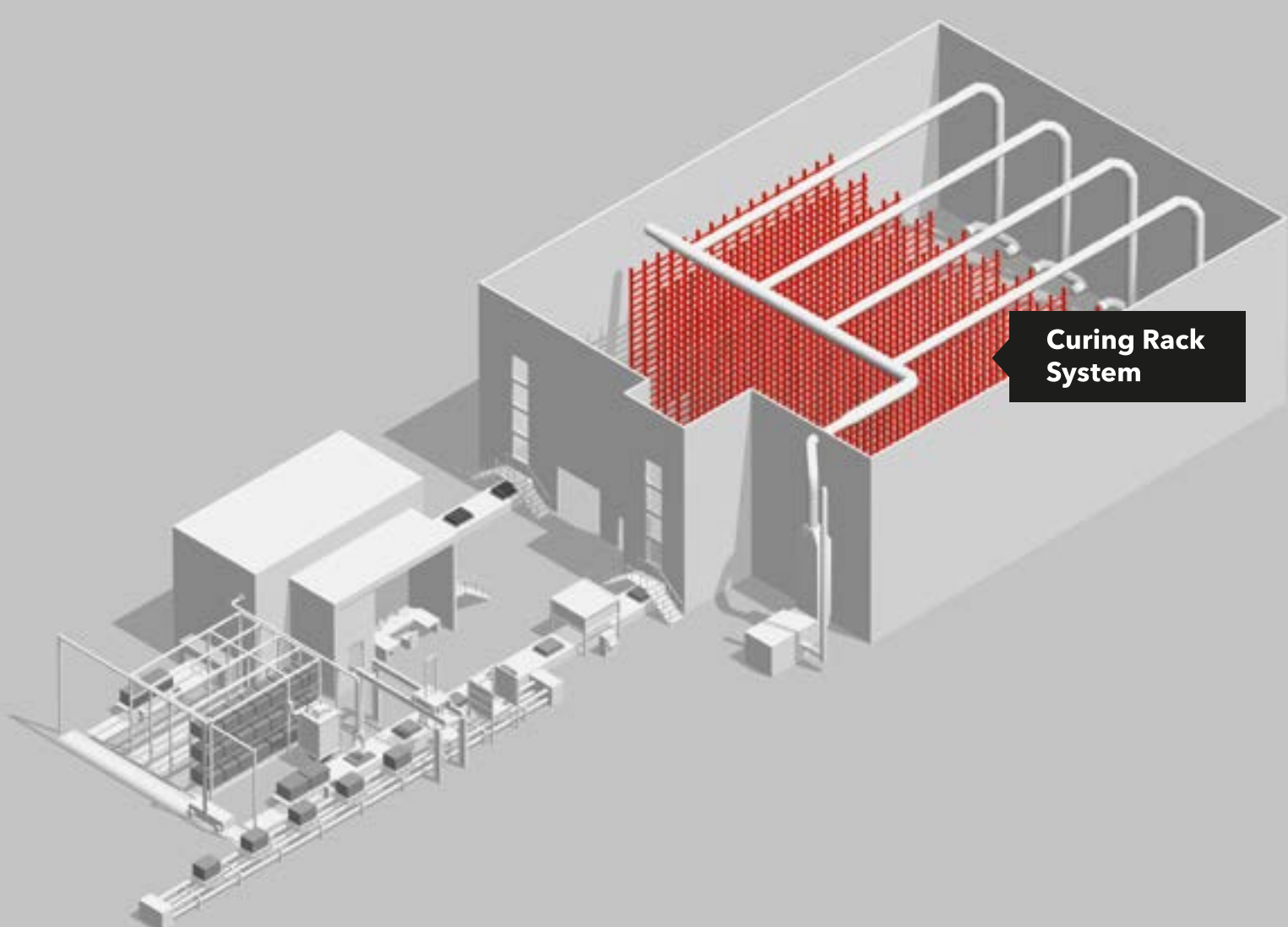
# The ROTHO System

- 01** Curing Rack System
- 02** Pallet Buffer & Mould Storage
- 03** Air Circulation
- 04** Concrete Curing System: ProCure
- 05** Sound Protection
- 06** Separation Wall
- 07** Control & Switchboard Room
- 08** Dust Extraction
- 09** ROTHO Control
- 10** ROTHO QUCON

## **Best conditions for the best quality concrete blocks.**

For more than 70 years, ROTHO provided solutions for the concrete block industry worldwide. We understand our clients' high pressure demands caused by the competition from a dynamic market and are aware of the constant technological development in order to further increase the effectiveness of plants.

We recognize the importance of a secure production environment. We are constantly enhancing the development of our ROTHO systems in order to increase production levels and prevent downtimes. Together we create perfect conditions for the best quality concrete blocks.



**Curing Rack System**

**Racks** → Curing → Rooms → Storage → Control & Analyze

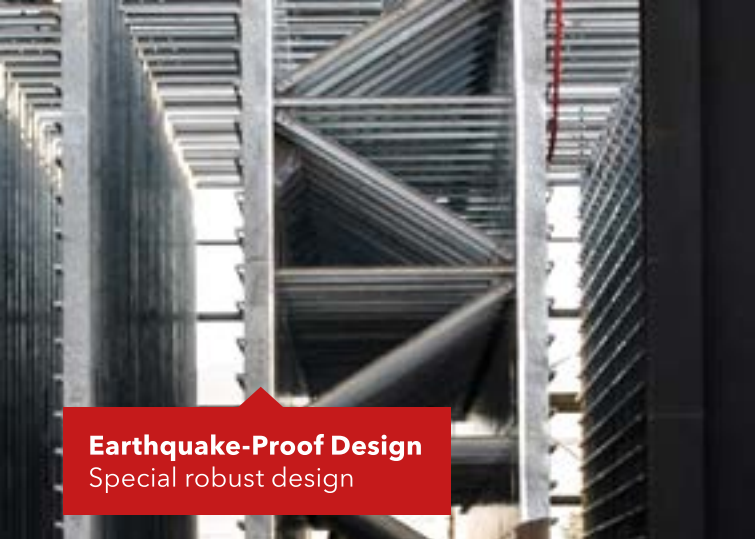
# Rack System

**Indoor Version + Outdoor Version  
+ Earthquake-Proof Design**

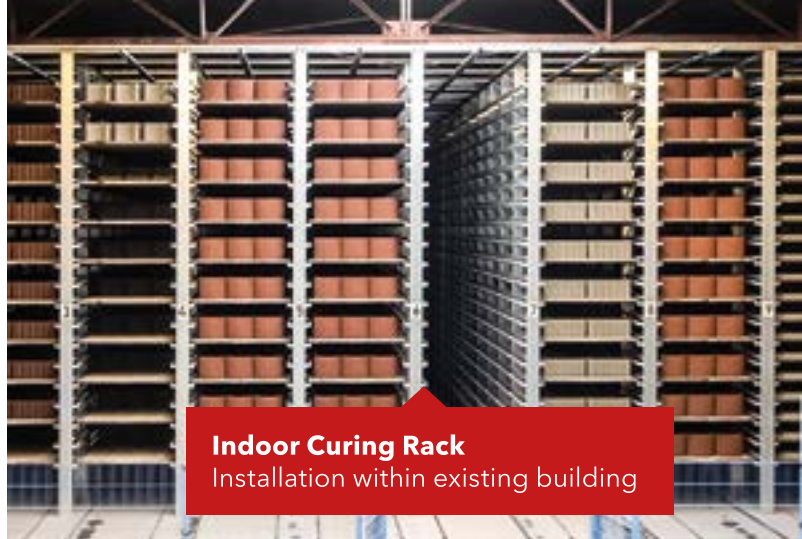
The most intelligent system for storing concrete products throughout the curing process.

## **ROTHO Curing Racks:**

- Quality-Rack-Design "Made in Germany" with a high durability
- Proven rack construction with experience from more than 2000 installations worldwide
- Prepared for sensor- and measuring technology
- From standard construction kits to individual solutions all from one source
- Prepared for air circulation and concrete curing system ProCure



**Earthquake-Proof Design**  
Special robust design



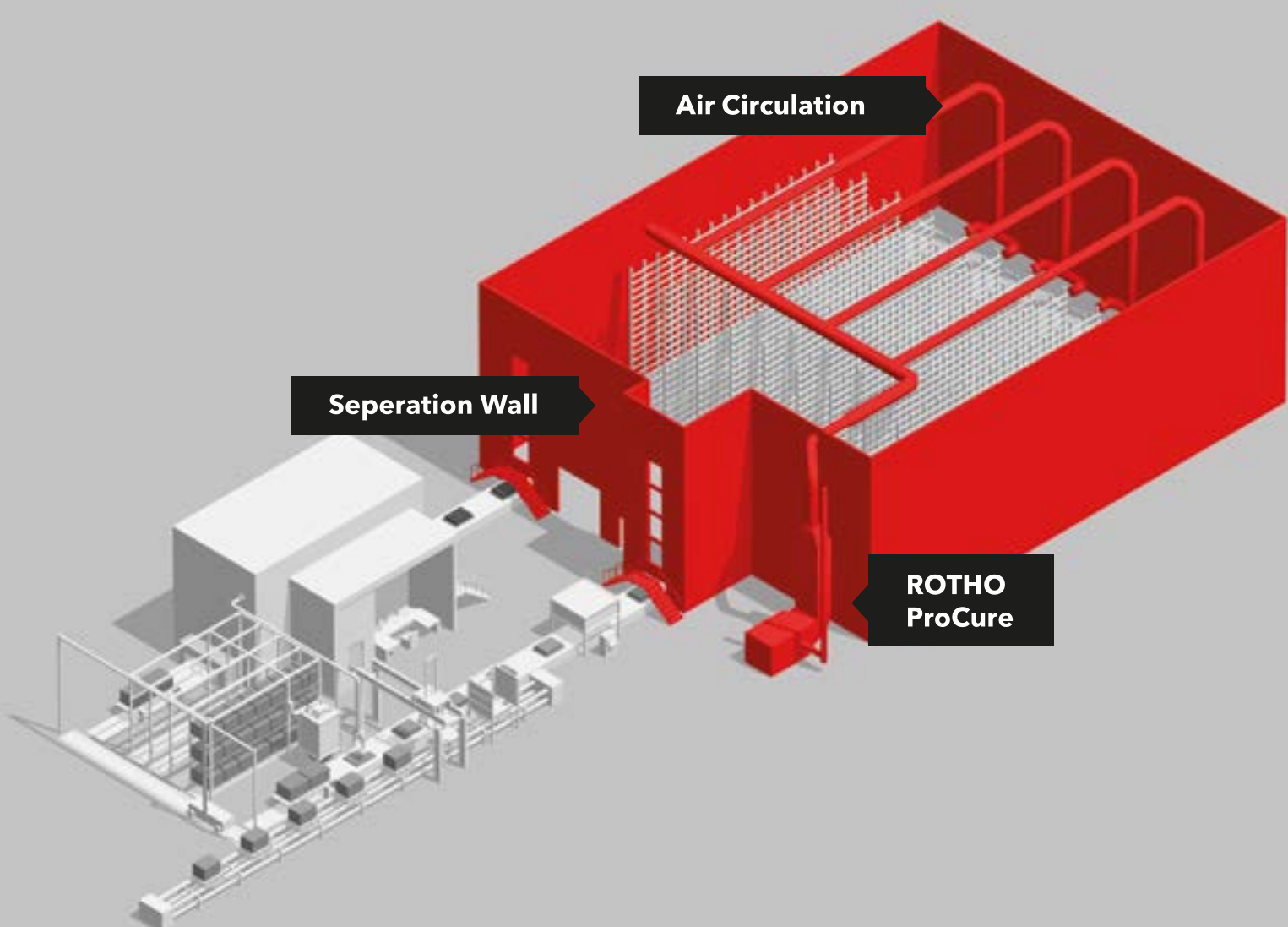
**Indoor Curing Rack**  
Installation within existing building



**Clip-In Technology**  
Fast, safe, and easy assembly



**Outdoor Curing Rack**  
With integrated outer cladding



**Air Circulation**

**Seperation Wall**

**ROTHO  
ProCure**



Racks → **Curing** → Rooms → Storage → Control & Analyze

# Concrete Curing System

## **Air Circulation + Concrete Curing System ProCure**

For all-season consistently high quality results and reduced curing times optional with active heating and humidification.

## **Air Circulation:**

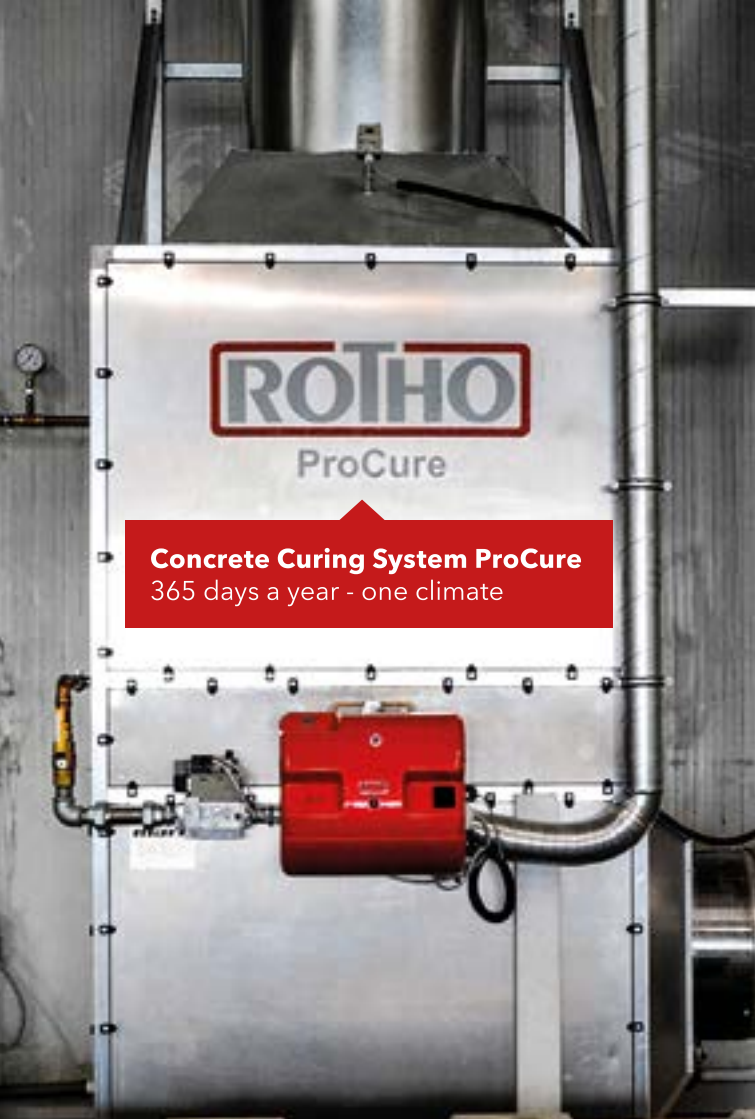
- Highest circulation capacity for uniform temperature - and humidity distribution
- Long service life due to high quality design
- Reduction of condensation

## **Concrete Curing System ProCure:**

- More consistent colour results
- Less efflorescence
- Reduced edge breakage
- Cement cost savings
- Maintenance-friendly and energy efficient

## **Separation Wall:**

- Individual planning and customization
- Design in different RAL-colours
- Comprehensive equipment program (Doors, windows, etc.)



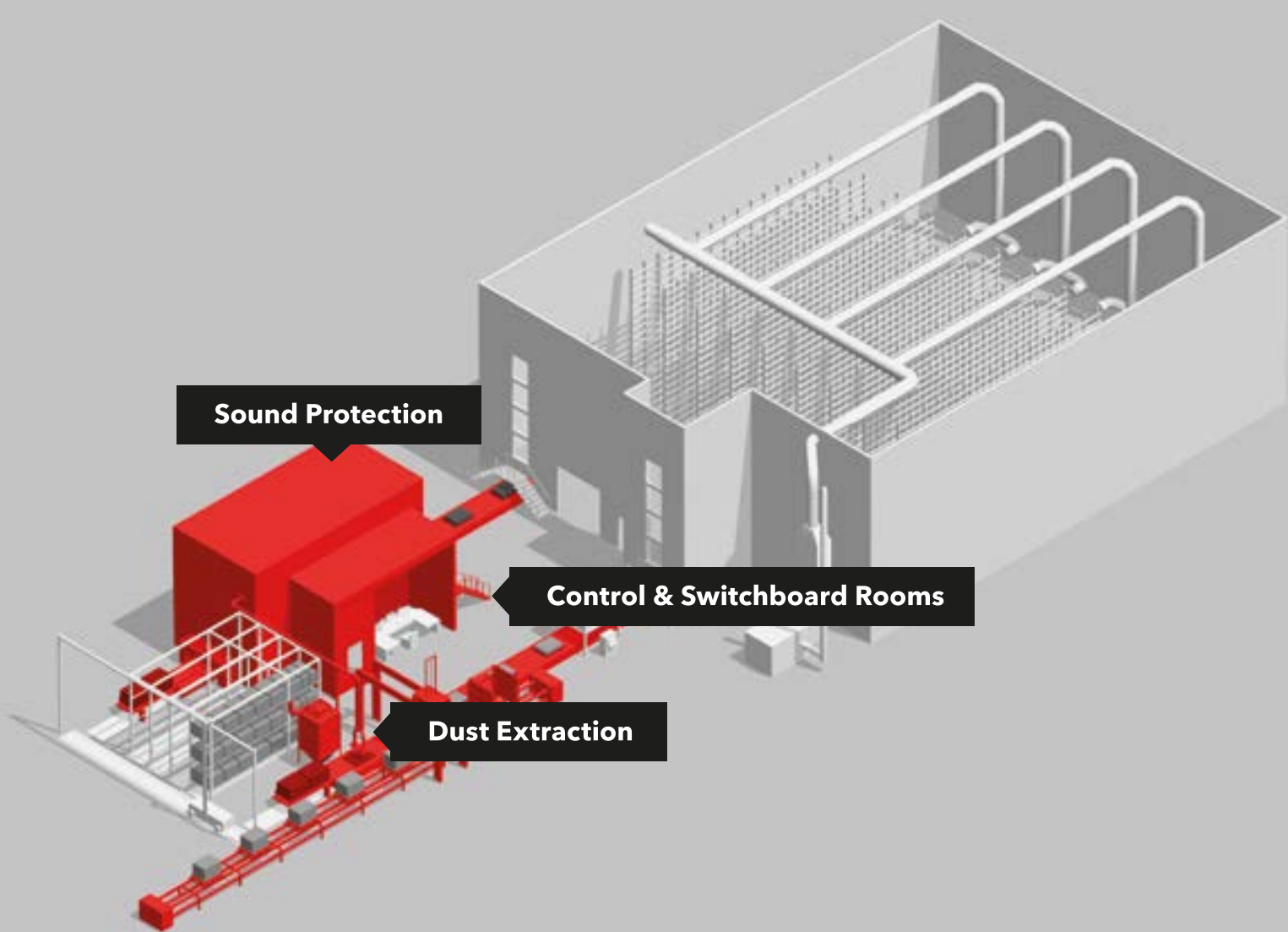
**Concrete Curing System ProCure**  
365 days a year - one climate



**Separation Wall**  
Thermal separation of wet- and dry side



**Air Circulation System**  
Uniformed curing conditions



**Sound Protection**

**Control & Switchboard Rooms**

**Dust Extraction**

Racks → Curing → **Rooms** → Storage → Control & Analyze

# Room Systems

**Sound Protection +  
Control & Switchboard Rooms +  
Dust Extraction**

Best working conditions for staff and plant equipment due to noise and dust reduction in the production process.

Racks → Curing → **Rooms** → Storage → Control & Analyze

### **Sound Protection:**

- Reduction of the noise level down to 85 dB (A)
- Comprehensive equipment program (Sliders, tunnels, windows)
- Design in different RAL-colours

### **Control & Switchboard Rooms:**

- Noise reduction down to 75 dB (A)
- Comprehensive equipment program
- Fire protection possible (F30 / F60 / F90)

### **Dust Extraction:**

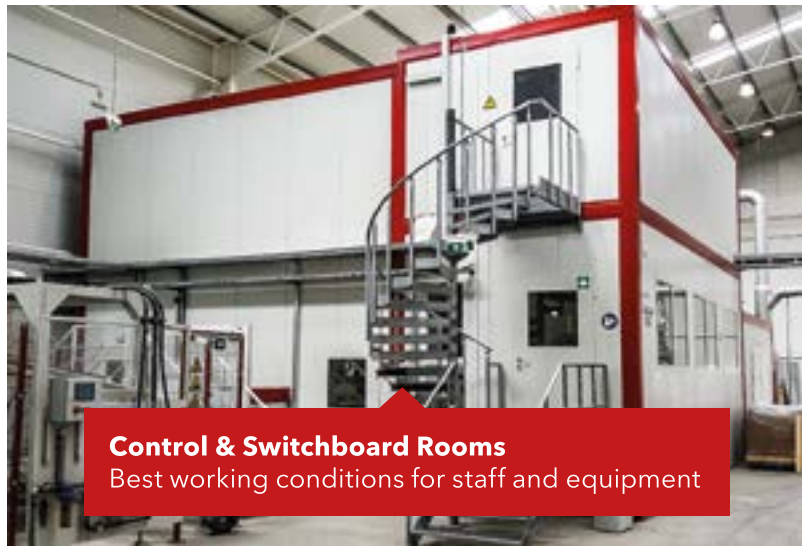
- Electronic cleaning automatic
- Robust and durable filter system
- Maintenance-friendly and energy efficient



**Dust Extraction System**  
Reduced machine wear out



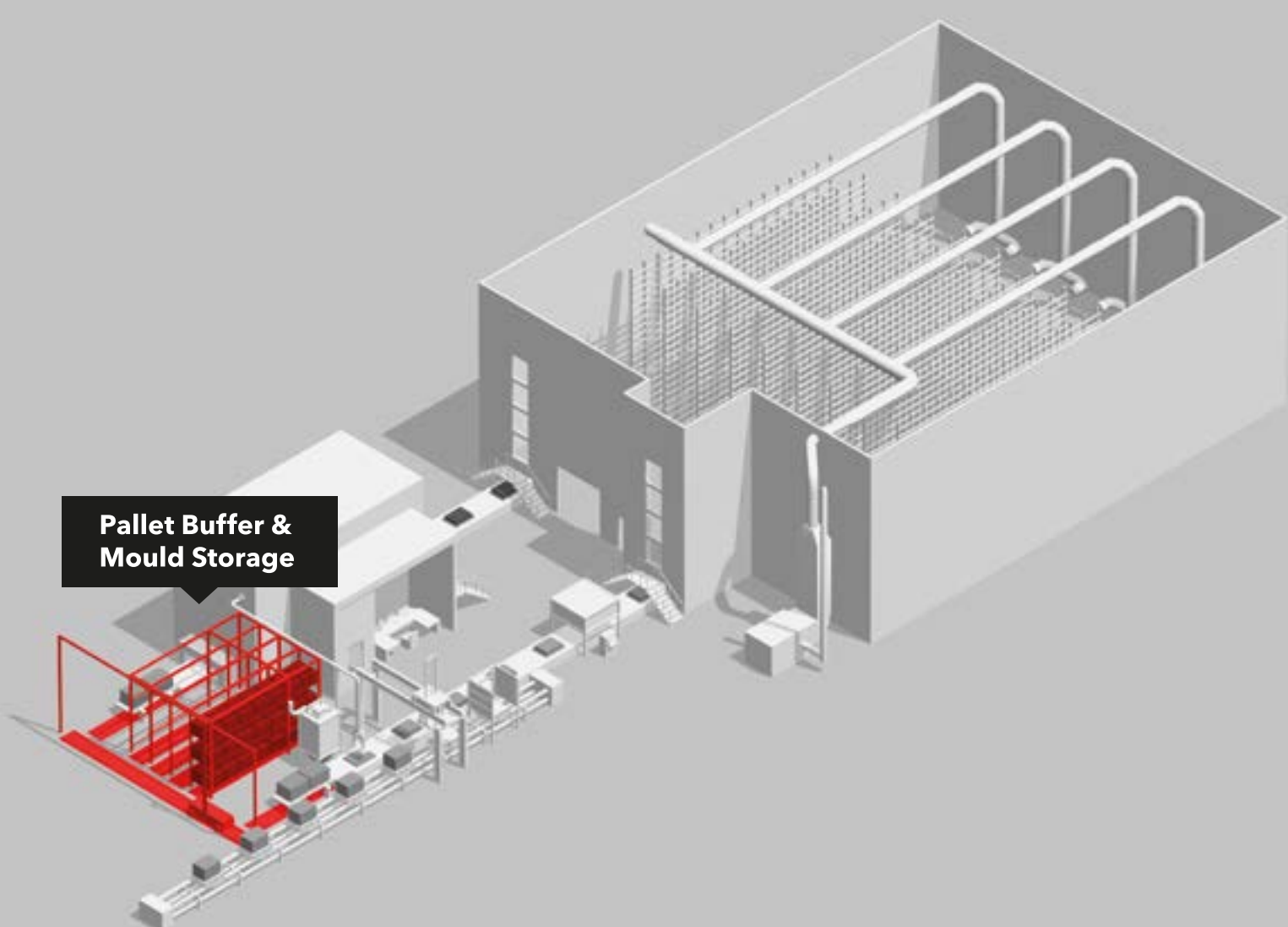
**Sound Protection**  
For noise-optimized enclosure of machines



**Control & Switchboard Rooms**  
Best working conditions for staff and equipment



**Pallet Buffer &  
Mould Storage**





Racks → Curing → Rooms → **Storage** → Control & Analyze

# Perfectly organized.

## **Pallet Buffer & Mould Storage**

Process-integrated and highly stable storage systems for moulds and production boards.

### **Pallet Buffer & Mould Storage:**

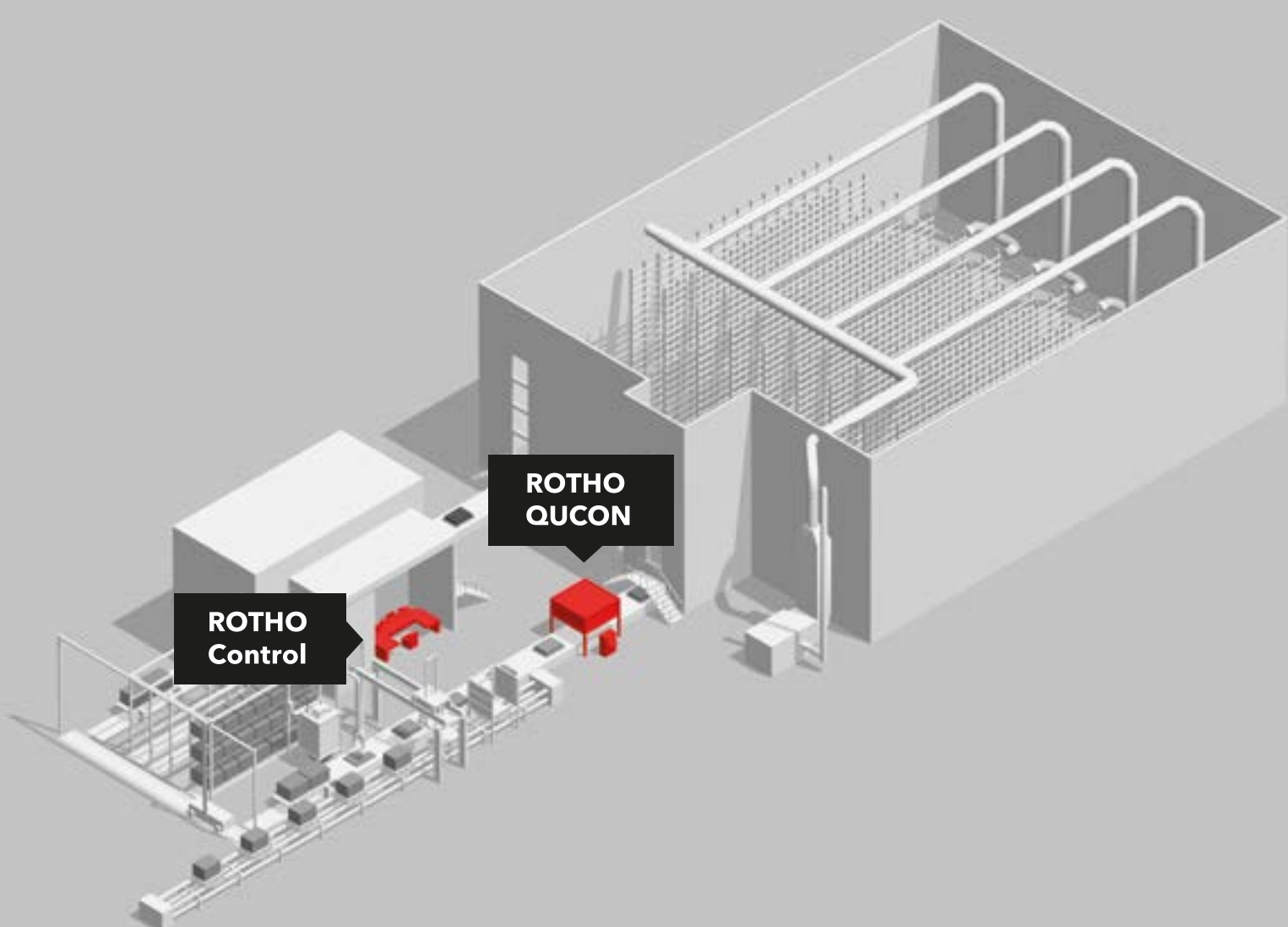
- Quality-Rack-Design “Made in Germany” with a high durability
- Individual solutions for automatic and manual operation
- Designed for loads up to 5 tons



**Mould Storage**



**Pallet Buffer System**



**ROTHO  
Control**

**ROTHO  
QUON**

Racks → Curing → Rooms → Storage → **Control & Analyze**

# Control & Analyze

**ROTHO Control + ROTHO QUCON**

## **ROTHO Control:**

- Easiest operation of complex processes
- Available as a mobile Cloud and on-premise software solution
- Worldwide online data access and ROTHO support
- Delta T control
- Zone control for Big Chambers
- Graded access permissions

## **ROTHO QUCON:**

- Sensor-based data basis for the optimization of concrete products
- 3D representation of humidity- and temperature fields in the curing rack
- Starter package „ROTHO Sensor Cubes“





# ROTHO Assembly

Our assembly teams ensure best conditions during the project assembly and commissioning phase. Worldwide.

# ROTHO Service

**worldwide**

Our Service is on your side to ensure best conditions in your concrete block plant.

## Service Offerings:

- Telephone, email, web-conference and on-site service
- Service Contracts
- Spare Parts
- Modernization & retro-fits
- Technical trainings
- Wide range of measurement and analysis tools & services
- Optimization consulting

**service@rotho.de** (E-Mail Service)  
**(+49) 02735/788-788** (Help-Line)  
**(+49) 0151/14311737** (Help-Line mobile)



**Global on-site installation teams**





## **Experience**

The average tenure of our employees is 25 years. This experience is used by our customers in more than 50 countries worldwide to operate their concrete block plants faster, more efficiently and in a secure environment.



## **Innovation**

In today's fast-paced, uncertain future, one thing is certain: the amount of data generated, evaluated and used will not decline. On the contrary, the number of sensors and algorithms will continue to rise within concrete block and paver plants. Even today, ROTHO offers unique intelligent systems that optimize concrete stone production plants using digital tools.



## **Tradition**

Neunkirchen, Siegerland - the home of ROTHO. We know our roots and have been a reliable partner for our customers for more than 100 years. ROTHO customers can be sure that spare parts and service will always be available in the future.



## **Personable**

Together we create the best conditions. Not just for concrete blocks. Reliable and trusting business relationships are even more important in an increasingly digitized world. The ROTHO business model is designed for long-term and sustainable success in close cooperation with our customers. We supply systems and projects that inspire our customers.





**Robert Thomas Metall- und  
Elektrowerke GmbH & Co. KG**  
Hellerstr. 6 | 57290 Neunkirchen

Tel: (+49) 02735/788-0  
Fax: (+49) 02735/788-559  
E-Mail: [info@rotho.de](mailto:info@rotho.de)

[www.rotho.de/intelligent](http://www.rotho.de/intelligent)